

# Cat's Meow



66" x 66"

## ***Elizabeth's Studio LLC***

440 S. Main Street, Milltown, New Jersey 08850

732-651-4115 [www.elizabethsstudio.com](http://www.elizabethsstudio.com)

2024: Elizabeth's Studio LLC—All rights reserved

Quilt designed by Deborah G. Stanley

## **Fabrics: *Cat's Meow* by Lucia Heffernan for Elizabeth's Studio LLC**

**41004 Black (block panel)**—1-1/3 yards (20 blocks)

**41005 Multi (packed cats)**—1 yard

**696 Multi (stripe)**—5/8 yard

**181 Bright White (paws)**—3/4 yard

**626 Black (dots)**—2 yards

Binding—**696 Multi (stripe)**—5/8 yard

Backing—4 yards

Batting—for 66" x 66" quilt top

### ***Cutting Directions:***

**41004 Black (block panel)**—Fussy-cut (20) 6-1/2" squares, centering motifs.

**41005 Multi (packed cats)**—Cut (3) 11" x WOF (width of fabric), crosscut into (8) 11" squares.

**696 Multi (stripe)**—Cut (5) 3-1/2" x WOF, crosscut into (20) 3-1/2" x 9-1/2" rectangles.

**181 Bright White (paws)**—Cut (4) 4" x WOF, crosscut into (40) 4" squares. Cut (2) 3-1/2" x WOF, crosscut into (20) 3-1/2" squares.

**626 Black (dots)**—Cut (4) 4" x WOF, cross cut into (40) 4" squares. Cut (1) 3-1/2" x WOF, crosscut into (5) 3-1/2" squares. Cut (3) 11" x WOF, crosscut into (8) 11" squares. Cut (7) 1-1/2" x WOF, set aside for border.

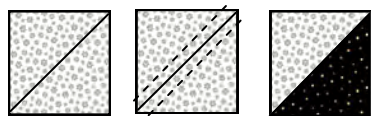
Binding: **696 Multi (stripe)**—Cut (7) 2-1/2" x WOF strips.

## Constructing the Blocks:

### Bear's Paw Block:

#### Make half square triangles:

Place 4" square **181 Bright White (paws)** right side together with 4" square **626 Black (dots)**. Draw a line diagonally across back of **181 Bright White (paws)** square. Sew a scant (a little less than) 1/4" on each side of the line. Cut units apart on the line and press to form half square triangles. **Trim to measure 3-1/2" square.**



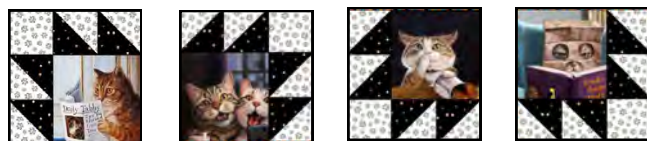
Repeat using (40) 4" squares of **181 Bright White (paws)** and **626 Black (dots)** to make a total of (80) half square triangles.

#### Make corner units:

Sew together (4) half square triangles, (1) 3-1/2" square **181 Bright White (paws)** and (1) 6-1/2" square **41004 Black (block panel)** to form corner unit.



**Note that you have to make (5) of each configuration to keep the cats heads up!**



#### Completing the Bear's Paw Blocks:

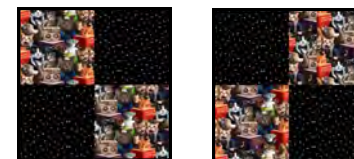
Sew together the 4 different corner units, 3-1/2" square **626 Black (dots)** and (4) 3-1/2" x 9-1/2" rectangles **696 Multi (stripe)** to form Bear's Paw block.

Repeat to make a total of (5) Bear's Paw blocks, keeping cats heads up as you sew!



### Four Patch Block:

Sew together (2) 11" squares **626 Black (dots)** and (2) 11" squares **41005 Multi (packed cats)** to form Four Patch Blocks.



**Make (2) of each configuration, keeping cats heads up.**

### Finishing the quilt top:

Sew together: Bear's Paw Blocks and Four Patch Blocks to form quilt top. Note the placement of the Four-Patch Blocks. Make sure that your cats are heads up as you sew the blocks together.



### Adding Borders:

Sew together (7) 1-1/2" x WOF strips **626 Black (dots)** matching short edges to form one long strip. From this, cut (2) 1-1/2" x 63-1/2" strips and (2) 1-1/2" x 65-1/2" strips.

Sew 63-1/2" strips to sides of quilt top. Sew 65-1/2" strips to top and bottom of quilt top.

### Completing Quilt:

Layer quilt top, batting and backing. Quilt as desired.

Use reserved 2-1/2" x WOF **696 Multi (stripe)** binding strips to complete quilt.