

# MONARCH DANCE



59" x 59"

## *Elizabeth's Studio, LLC*

440 S. Main Street, Milltown, New Jersey 08850  
732-651-4115 [www.elizabethsstudio.com](http://www.elizabethsstudio.com)  
2024: Elizabeth's Studio LLC—All rights reserved

*Quilt design by Deborah G. Stanley*

## ***FABRIC: Monarch Dance by Daniel Ramirez for Elizabeth's Studio LLC***

**32009 Black (dancers)**—1-1/2 yards

**32009 White (dancers)**—5/8 yard

**32008 Black (stripe)** —1/3 yard

**32008 White (stripe)**—1/3 yard

**32007 Blue (flowers)**—3/8 yard

**32007 Turquoise (flowers)**—3/8 yard

**Black Solid**—3/8 yard

**White Solid**—3/8 yard

Binding: **32007 Turquoise (flowers)**— 1/2 yard

Backing: 4 yards, pieced vertically

### **Cutting Directions:**

**32009 Black (dancers):** Cut (3) 5-1/2" x WOF (width of fabric), cross cut into (8) 5-1/2" x 10-1/2" rectangles. Cut (6) 4-1/2" x WOF, set aside for outer border.

**32009 White (dancers):** Cut (3) 5-1/2" x WOF, cross cut into (8) 5-1/2" x 10-1/2" rectangles.

**32008 Black (stripe):** Cut (2) 10-1/2" squares— fussy cut to center motifs.

**32008 White (stripe):** Cut (2) 10-1/2" squares—fussy cut to center motifs.

**32007 Blue (flowers):** Cut (2) 5-1/2" x WOF, cross cut into (4) 5-1/2" x 20-1/2" border rectangles.

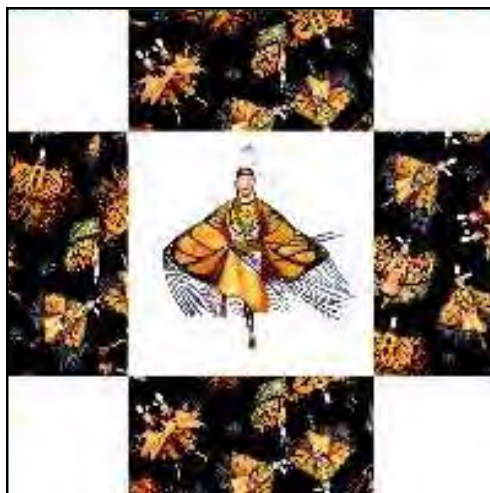
**32007 Turquoise (flowers):** Cut (1) 5-1/2" x WOF, cross cut into (4) 5-1/2" x 20-1/2" border rectangles.

**Black Solid:** Cut (2) 5-1/2" x WOF, cross cut into (12) 5-1/2" squares.

**White Solid:** Cut (2) 5-1/2" x WOF, cross cut into (8) 5-1/2" squares.

**Binding—32007 Turquoise (flowers):** Cut (6) 2-1/2" x WOF strips, set aside.

**COMPLETING CENTER BLOCKS (20-1/2" square):**



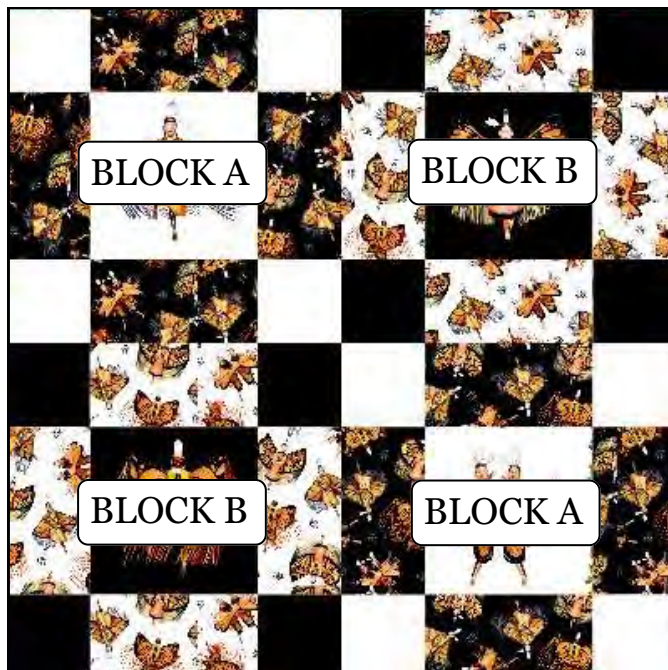
Use 5-1/2" x 10-1/2" rectangles **32009 Black (Dancers)**, 5-1/2" squares **White Solid**, and fussy-cut 10-1/2" squares **32008 White (stripe)** to form BLOCK A. Make (2).

BLOCK A



Use 5-1/2" x 10-1/2" rectangles **32009 White (Dancers)**, 5-1/2" squares **Black Solid**, and fussy-cut 10-1/2" squares **32008 Black (stripe)** to form BLOCK B. Make (2).

BLOCK B



**COMPLETING THE CENTER SECTION"**  
**(40-1/2" x 40-1/2")**

Sew together (2) Block A and (2) Block B to form center section.

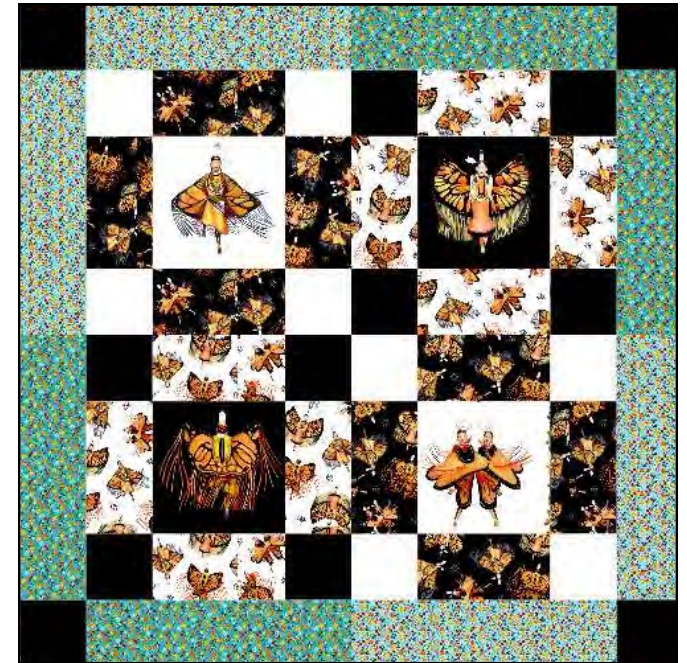


## **COMPLETING FIRST BORDER:**

Sew together (1) 5-1/2" x 20-1/2" **32007 Blue (flowers)** and (1) 5-1/2" x 20-1/2" **32007 Turquoise (flowers)** on short ends to form inner border. Make (4) border sections.

Add one section to each side of the center section, noting the color placement on diagram.

Add (1) **Black Solid** 5-1/2" squares to each end of remaining borders. Add to top and bottom of center section.



## **SECOND BORDER:**

Sew together (6) 5-1/2" x WOF strips **32009 Black (dancers)** on short ends to form long strip. From this, cut (2) 4-1/2" x 50-1/2" border strips. Add to sides of center section.

Cut (2) 4-1/2" x 58-1/2" strips, add to top and bottom of quilt top.

## **COMPLETING THE QUILT:**

Layer with batting and backing. Quilt as desired. Use the reserved **32007 Turquoise (flowers)** binding strips to complete the quilt.