

OUT ON A LIMB



49" x 49"

Elizabeth's Studio, LLC

440 S. Main Street, Milltown, New Jersey 08850

732-651-4115 www.elizabethsstudio.com

2024: Elizabeth's Studio, LLC—All rights reserved

Quilt design by Deborah G. Stanley

FABRIC: Out on a Limb by Greg Alexander for Elizabeth's Studio, LLC

9208 Black (panel)—1 yard

716 Gold (tonal) —1/2 yard

715 Gold (leaves)—1/2 yard

586 Sienna (cork)—3/8 yard

709 Brown (bark)—1/2 yard

Binding: **715 Gold (leaves)**— 1/2 yard

Backing: 3-1/2 yards, pieced vertically

Cutting Directions:

9208 Black (panel): Cut panel to measure 36-1/2" wide by 30-1/2" tall, centering motifs as desired

716 Gold (tonal): (4) 2-1/2" x WOF (width of fabric), cross cut into (2) 2-1/2" x 36-1/2" and (2) 2-1/2" x 40-1/2" border strips AND (1) 3" x WOF, cross cut into (12) 3" squares AND (1) 2-1/2" x WOF, cross cut into (6) 2-1/2" squares and (12) 2-1/8" squares.

715 Gold (leaves): (1) 3" x WOF, cross cut into (12) 3" squares AND (2) 2-1/2" x WOF, cross cut into (18) 2-1/2" squares AND (2) 2-1/2" x WOF, set aside for strip piecing.

586 Sienna (cork): (2) 4-1/2" x WOF, set aside for strip piecing border AND (1) 2-1/2" x WOF, cross cut into (6) 2-1/2" squares for stems.

709 Brown (bark): (5) 2-1/2" x WOF strips, set aside for outer border.

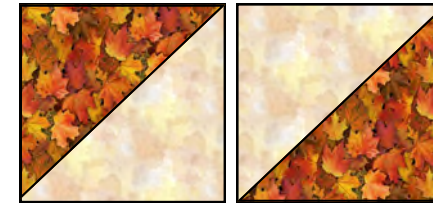
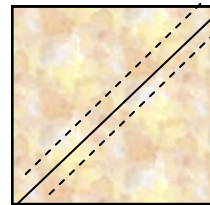
Binding—715 Gold (leaves): Cut (6) 2-1/2" x WOF strips, set aside.

Constructing Maple Leaf Blocks:

Constructing Half-Square Triangle units:

Draw a diagonal line on the back of a 3" square **716 Gold (tonal)**. Place right sides together with a 3" square **715 Gold (leaves)**. Sew a scant 1/4" (a little less than) away from the drawn line on both sides of the line. Cut on the line and press open to form (2) Half-Square Triangles.

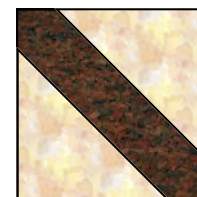
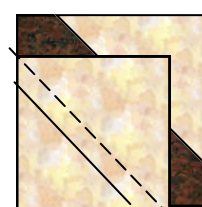
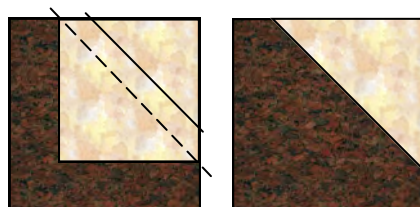
Trim if needed to measure 2-1/2" square.



Repeat to make (24) total **Gold tonal/Gold leaves** Half-Square Triangle units.

Making Stem units:

Repeat steps as above—draw line on back of 2-1/8" square **716 Gold (tonal)**, place RST with 2-1/2" square **586 Sienna (cork)**. This time, SEW ON THE LINE, and CUT 1/4" AWAY. Add another 2-1/8" square **716 Gold (tonal)** to the opposite side to complete stem. Make a total of (6) 2-1/2" stem units.



Completing Maple Leaf Blocks:

Sew together 2-1/2" square **716 Gold (tonal)**, (4) **Gold (tonal)/Gold (leaves)** half-square triangle units, (3) 2-1/2" squares **715 Gold (leaves)** and **Gold (tonal)/Sienna (cork)** Stem unit to form 6-1/2" square Maple Leaf Block. Note the orientation of the Half-Square Triangle units.

Repeat to make a total of (6) Maple Leaf Blocks.



Adding Borders:

Border 1: Maple Leaf Blocks

Sew together the 6 Maple Leaf Blocks. We sewed them in one direction, facing left and pointing up, but you can join them however you like.



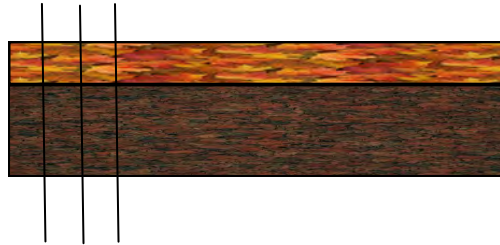
Add to the bottom of the 30-1/2" x 36-1/2" **9208 Black (panel)**.

Border 2:

Add the 2-1/2" x 36-1/2" **716 Gold (tonal)** strips to the sides of the quilt top.
Add the 2-1/2" x 40-1/2" **716 Gold (tonal)** strips to the top and bottom of the quilt top.

Border 3: Pieced

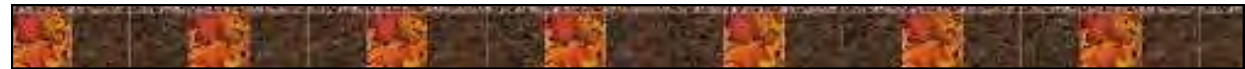
Sew together the 4-1/2" x WOF **586 Sienna (cork)** strip with 2-1/2" x WOF **715 Gold (leaves)** to form 6-1/2" x WOF strip. Make (2) strip sets.



Cut (28) 2-1/2" segments.



Sew together (7) segments to form pieced border strip. Make (4).



Remove a 2-1/2" square **715 Gold (leaves)** from one end of (2) of the completed border strips.



Sew these border strips (begin and end with Sienna (cork)) to the sides of the quilt top.

Add the (2) **715 Gold (leaves)** that you removed from the side border strips to the **Sienna (cork)** end of the remaining border strips, which now begin and end with **Gold (leaves)**. Add these to the top and bottom of the quilt top.

Adding Outer Border:

Sew together the (5) **709 Brown (bark)** strips on short ends to form one long strip. From this, cut (2) 2-1/2" x 44-1/2" and (2) 21/2" x 48-1/2" border strips. Add the 44-1/2" borders to the sides of the quilt top. Add the 48-1/2" borders to the top and bottom of the quilt top.



Finishing the Quilt:

Layer quilt top, batting and backing. Quilt as desired.

Use reserved **715 Gold (leaves)** binding strips to complete quilt.