

## STRONG EARTH WOMAN



44" x 54"

### *Elizabeth's Studio, LLC*

440 S. Main Street, Milltown, New Jersey 08850  
732-651-4115 [www.elizabethsstudio.com](http://www.elizabethsstudio.com)  
2023: Elizabeth's Studio, LLC—All rights reserved

Quilt design by Deborah G. Stanley

**FABRIC:** *Strong Earth Woman* by Leah Marie Dorion for Elizabeth's Studio, LLC

**39000 Black (panel)**—2/3 yard

**39003 Gold (allover)** —3/8 yard

**39003 Purple (allover)** —1/4 yard

**39003 Blue (allover)**—1/4 yard

**39001 Multi (stripe)**—1-3/4 yards

**Black Solid**—3/8 yard

Binding: **39003 Gold (allover)**— 1/2 yard

Backing: 3 yards, pieced horizontally

### **Cutting Directions:**

**39000 Black (panel):** Center and trim panel to measure 22-1/2" x 40-1/2".

**39003 Gold (allover):** (2) 2-1/2" x 40-1/2" AND (2) 3" x 26-1/2".

**39003 Purple (allover):** (1) 5-1/2" x WOF (Width Of Fabric), cross cut into (6) 5-1/2" squares .

**39003 Blue (allover):** (1) 5-1/2" x WOF, cross cut into (6) 5-1/2" squares.

**39001 Multi (stripe):** (2) 5" x LENGTH of fabric, cross cut into (2) 5" x 54-1/2" AND (1) 5" x LENGTH of fabric, cross cut into (2) 5" x 26-1/2".

Extra is allowed for centering of motifs if desired.

**Black solid:** (2) 5-1/2" x WOF, cross cut into (12) 5-1/2" squares.

**Binding—39003 Gold (allover):** (6) 2-1/2" x WOF strips, set aside.

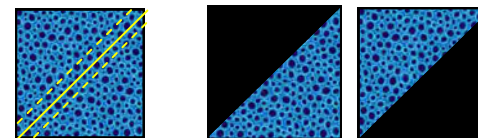
### **Construction of Quilt:**

Add first border to quilt: Sew 2-1/2" x 40-1/2" strips **39003 Gold (allover)** to sides of center panel **39000 Black (panel)**. Add 3" x 26-1/2" strips **39003 Gold (allover)** to top and bottom of center panel.

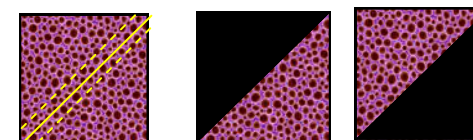
Add 5" x 26-1/2" strips **39001 Multi (stripe)** to top and bottom of center panel.

### **Constructing Half-Square Triangles:**

Draw a diagonal line on the back of a 5-1/2" square **39003 Blue (allover)**. Place right sides together with a 5-1/2" square **Black Solid**. Sew a scant 1/4" away from the drawn line on both sides of the line. Cut on the line and press open to form (2) Half-Square Triangles. Trim to measure 5" square. Repeat to make (12) total **Blue/Black** Half-Square Triangles.

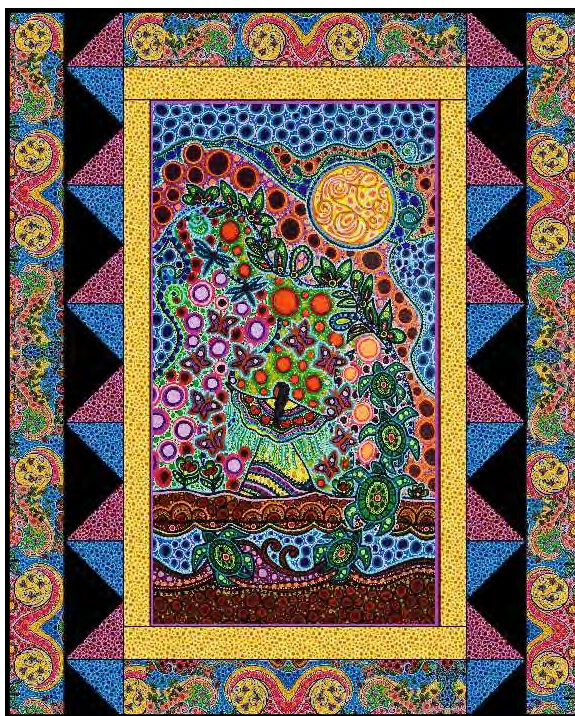


Repeat above steps to make (12) **Black Solid** and **39003 Purple (allover)** Half-Square Triangles. Trim to measure 5" square.



### **Constructing Half-Square Triangle Borders:**

Sew together (6) **Blue/Black** Half-Square Triangles and (6) **Purple/Black** Half-Square Triangles, alternating colors. Make (2) borders, one beginning with Blue and one with Purple.



### **Add Borders to Quilt Top:**

Sew (1) Half-Square Triangle Border to each side of the quilt top. Be sure that the **Blue** and **Purple** points are facing out.

Then add the 5" x 54-1/2" **39001 Multi (stripe)** borders to the sides of the quilt top.

### **Finishing the Quilt:**

Layer the quilt top, batting and backing. Quilt as desired. Finish the quilt using the reserved 2-1/2" **39003 Gold (allover)** strips.